

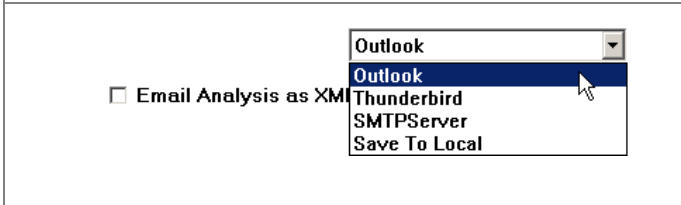
Analysis Preview

Users can preview an analysis in version 6.80 before opening and loading it to the work space. Go to > Open, highlight an analysis name and click on the Preview button.

Additional functions in the File Open dialog include:

- Rename analysis – give a new name to an existing analysis.
- Move Owner – reassign existing analysis to a new owner. This function requires Supervisor login.

- TOPS
- PackStak
- LoadStak

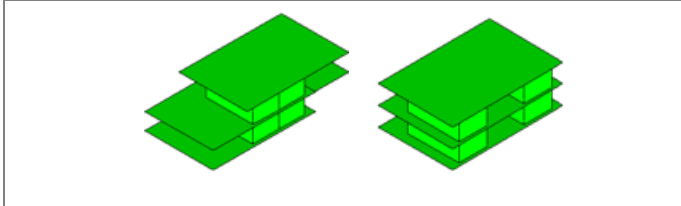


Support More Email Clients

Email services like Thunderbird are now supported. The one-time setting is specified under Tools > Configuration > Reports tab.

If SMTP Server is selected, be prepared to provide server name, port address and username.

- TOPS
- PackStak
- LoadStak

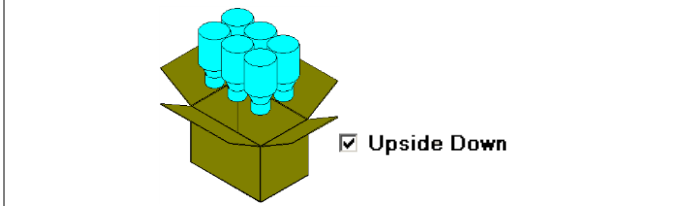


More Blister Pack Options

- Different Left and right indents for the blister
- Blister packs nested tight or with the cardboards aligned

Depicted: Blister packs with different left and right indents nested tight (left) or with board aligned (right).

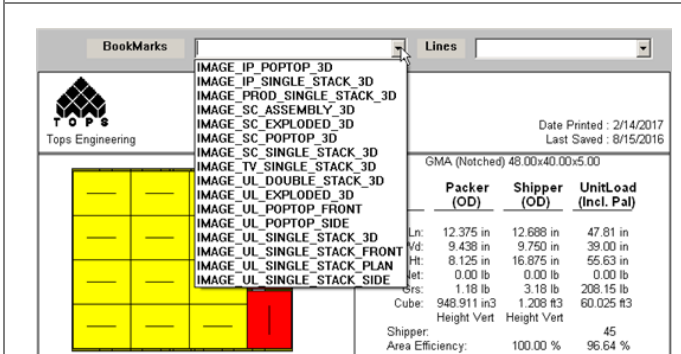
- TOPS
- PackStak
- LoadStak



Upside down bottles

Bottles can be loaded upside down by checking the Bottle Parameters > Upside down option.

- TOPS
- PackStak
- LoadStak

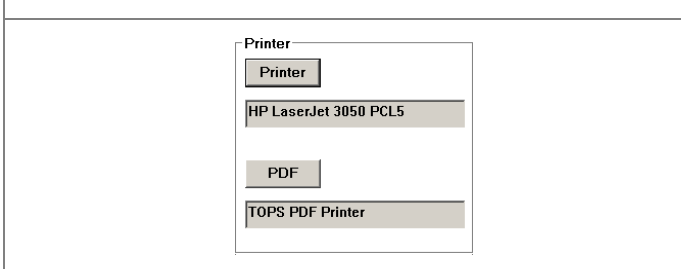


Add Bookmarked Images in Reports

Image bookmarks are now available in TOPS reports which help in customizing the standard report formats.

At the Analysis Print Preview screen, click on **Edit Text**. Via the two drop boxes, BookMarks and Lines, you can add additional images, lines and arrows to the report. Once the elements are added, they can be placed at any desired location.

- TOPS
- PackStak
- LoadStak

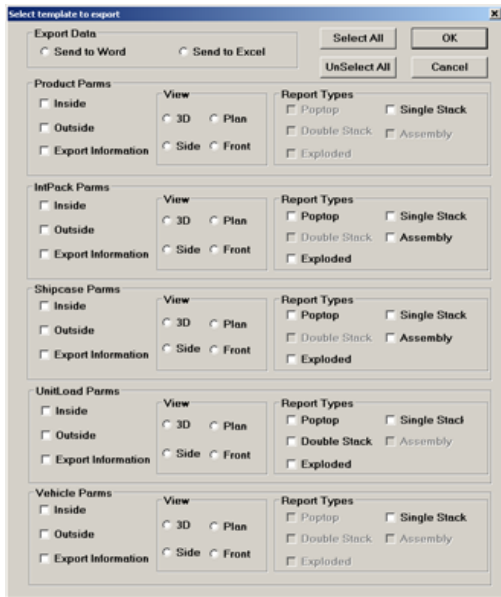


Save Printer choices

Users can now save their printer and pdf printer choices for future use.

Go to Tools > Configuration > Reports tab, click on the Printer and PDF buttons to make selection.

- TOPS
- PackStak
- LoadStak



Improved Export to Word

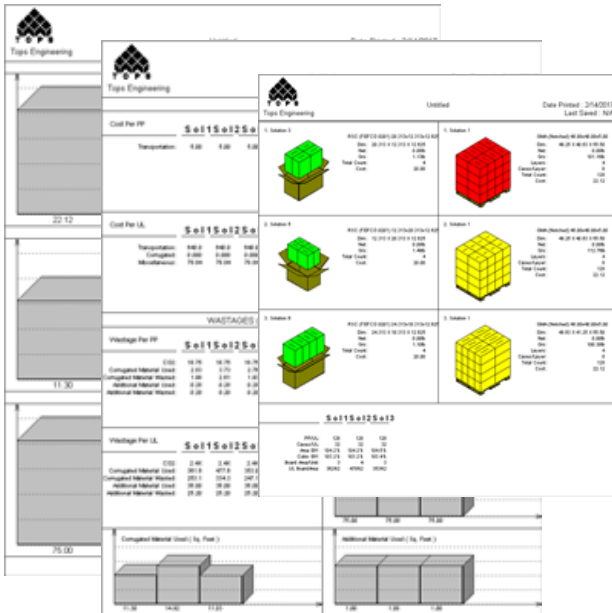
New Templates can be created from TOPS Pro in addition to the old predesigned templates.

Go to Export > Send to MS Office, click on the New button to access the parameters to be exported to MS Word or Excel.

- To MS Word or Excel
- Select All | UnSelect All – to quickly select or unselect all available data and images to be exported
- Checkbox – check against the option to be included in the new MS Office report

MS Word/Excel will open and generate the report when you click the OK button.

- TOPS
- PackStak
- LoadStak

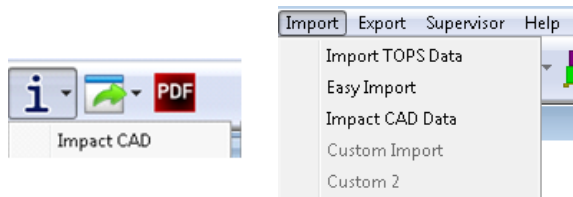


ESR – Eco Saving Report

Select multiple solutions, then go to Tools > ESR > ESR for Analysis. You can view main report, statistics and charts.

Improved ESR report is now more powerful and user friendly. You can compare up to 5 solutions, at the shipcase and pallet stage for use of corrugate materials, associated cost, wastage and CO2 emission, if applicable.

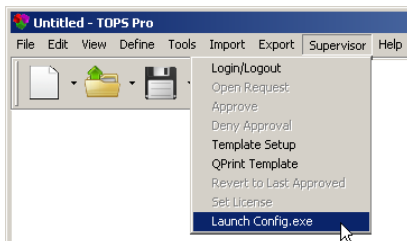
- TOPS
- PackStak
- LoadStak



Integration with Impact CAD

Data can now be transferred between TOPS Pro and Impact CAD software. The new interface lets users transfer box and pallet information. TOPS creates and sends both Box and Knockdown analyses to Impact.

- TOPS
- PackStak
- LoadStak



TOPS Config Quick Launch

TOPS Pro Config allows user to change default settings, define paper, board combinations and a lot more. You can now quickly start TOPS Pro Config within TOPS main program by going to Supervisor > Launch Config.exe.